



KWS

S I X T H F O R M

KWSixth
New student and
parent information
evening



Tuesday 20th May 2025

David Martin

Headteacher



Chris Laing

Assistant Headteacher

Head of KWSixth



Mrs. J. Hall

Sixth Form Manager



Why KWSixth?....

- Outstanding lessons.
- Broad curriculum offer.
- Academic success.
- Pastoral care.
- Consortium.
- Opportunities and enrichment.
- Development of skills and competencies.

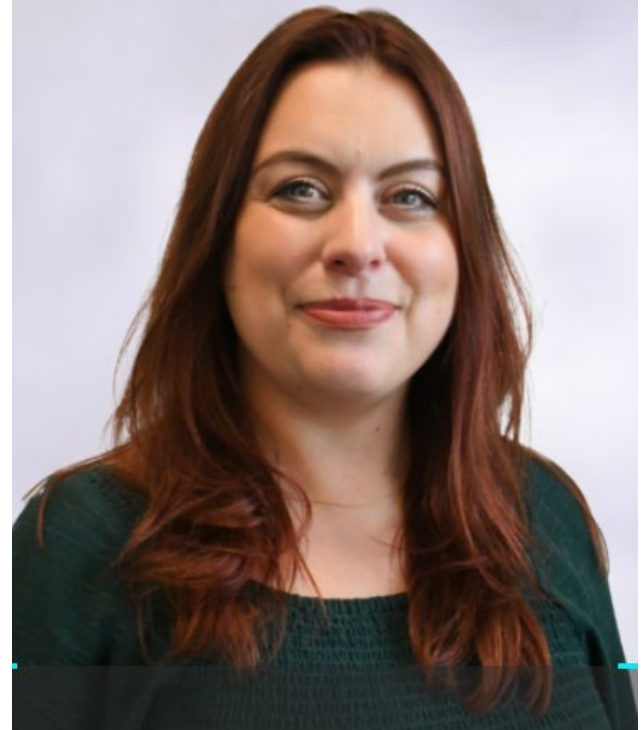


***‘Building *your*
success,
together’***



Mrs. L. Gardner

Deputy Head of Sixth Form



**UCAS and
Apprenticeship Support**

**Oxbridge and
Competitive
Universities**

**Links to Russell
Group Universities**

**Leadership
Foundations (STEP)**

Give Back Scheme

Sports teams

Mentoring

**Sixth form
Leaders**

Period 7



Opportunities at KWS

**Thursday Enrichment:
EPQ
Dragon's Apprentice
IDEA**

Work placements

VESPA - study skills

Arts Award

**Cooking/university prep
Public speaking/debate
Eton X / Unifrog**

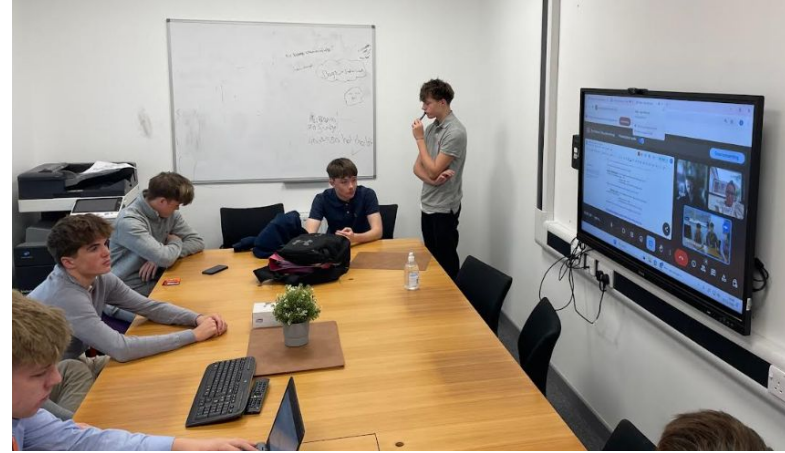
Trips

**Duke of
Edinburgh**



Examples of opportunities offered to students so far in year 12:

- Lloyds Bank
- Pathways to Banking and Finance with LSE.
- MBDA
- NHS
- Social Work
- KPMG
- Exploring Law
- King's College Medicine and Dentistry
- Green Careers
- Higher and Degree Apprenticeships



- Cambridge Higher Aspirations Scheme
- Rayden's Solicitors Competition- Mock Trial

Grace Simonite and Matthew Jones

Why KWSixth?



Joined from Chiltern Academy.

Performing Arts and English.

Tips for settling in.



Joined from St.Georges

Sport and Art.

Welcome and
transition.

Extra curricular
opportunities.



Next Steps timeline....

Friday 20th June	Sixth form Induction day.
Thursday 21st August	<p>GCSE results day and enrolment into KWSixth.</p> <p>The school will be open and members of the sixth form team will be available to speak to on Friday 22nd August and during the following week if students need to discuss their results and/or subject choices.</p>
Thursday 4th September	Year 12 begin Autumn term.



Parents information....

- Bring your own device
- 16-19 Bursary Fund
- Mental health and well being support
- Academic support
- Sixth form fund
- Sixth form handbook

